



## COMMUNITY SAFETY PRIORITIES 2023-2026 – FOREWORD

---

### *Working together to make Swansea a Safer, more Cohesive and Vibrant Place to Live, Work and to Visit*

Welcome to the Safer Swansea Partnership Priorities for 2023 – 2026. The priorities reflect the changing community safety landscape and the Safer Swansea Partnership vision to work together to ensure that we are prepared to meet the changing environment in which we work.

The priorities reflect the continued challenges and cover key areas such as domestic violence, substance use, child sexual exploitation, human trafficking and modern day slavery, and emerging themes such as serious violence which cut across the community safety and safeguarding areas of responsibility. Our aim is to work together more efficiently and effectively, to use all of the resources available to us in our communities, and to build positive, strong and resilient communities where the most vulnerable are supported and protected.

Members of the Safer Swansea Partnership remain committed to working together, building on the success over the last few years and ensuring that Swansea continues to be a safe place to live, work and to visit.

Martin Nicholls

Chief Executive, Swansea Council

Trudi Meyrick

Chief Superintendent, South Wales Police

## **SAFER SWANSEA PARTNERSHIP – MEMBERSHIP**

---

The Safer Swansea Partnership consists of key representatives from statutory partners and other organisations with an interest and influence in community safety issues and who are key contributors in the priority setting process.

### **Statutory Members include:-**

- South Wales Police
- Swansea Council
- Swansea Bay University Health Board
- National Probation Service
- Mid & West Wales Fire and Rescue Service

### **Other Members include:-**

- Police and Crime Commissioners Office
- Youth Justice Service
- Elected Member responsible for Community Safety
- Western Bay Safeguarding Boards
- Western Bay Area Planning Board
- Welsh Ambulance Service
- HE/FE Representation
- Public Health Wales
- Third Sector representation

## COMMUNITY SAFETY PRIORITIES 2023-2026

This document identifies six priorities for the Safer Swansea Partnership (SSP). They are not in any order of precedence or significance as all are of equal importance.

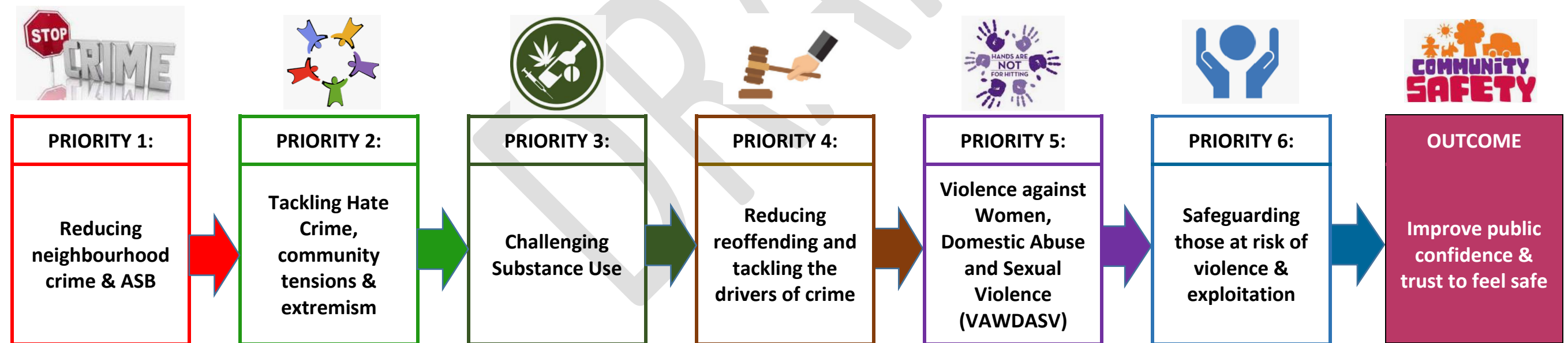
The priorities will ensure that partners **'Work together to make Swansea a Safer, more Cohesive and Vibrant Place to Live, Work and to Visit'**. This aim is shared by all Community Safety Partnership members. We hope that by delivering on our aims and strategic intentions for each priority, we will be able to improve public confidence and trust in local policing and community safety partners to make Swansea safer.

Swansea Council has a Well Being objective in its Corporate Plan of 'Safeguarding People from Harm' and the Safer Swansea Partnership priorities will support the Council in meeting this objective.

The Police also have local policing priorities that are aligned to the broader community safety priorities. These are:-

- Drug trafficking and supply / Rape and Serious Sexual offences / Domestic abuse
- Serious violence/ Terrorism and extreme threats / Child exploitation and abuse
- Fraud and Vulnerable Victims / Modern Slavery.

Working in partnership to address these issues, the SSP will ensure it monitors and responds to other specific crime types that present an ongoing problem in Swansea.



Each of the Safer Swansea Partnership priorities will be underpinned and supported by individual action plans. Progress will be monitored on a quarterly basis by the steering group and an annual report will be presented to the Public Service Board.

## PRIORITY 1 – Reducing Neighbourhood Crime & ASB

Key areas of focus :



- Anti-Social Behaviour (ASB)
- Public Space Protection Order (PSPO) - Targeting problem locations
- Evening & Night Time Economy
- Contextual Safeguarding
- Street Vulnerability MARAC

### Why is this a priority?

- Anti-social behaviour is not as a series of isolated incidents but is a pattern of behaviour that is almost always repetitive and oppressive, often directed at victims who are vulnerable and live in more deprived areas and is often a prediction of more serious offending later down the line.
- People deserve to feel safe where they live as ASB can devastate communities and can have a profound impact on victims. Any behaviour that intimidates residents or puts them and visitors at risk in our communities is completely unacceptable and will not be tolerated.
- Proactively dealing with ASB and providing sustainable solutions will increase public confidence in the partnership and will facilitate increased reporting in this area and the levels of community intelligence.

### Our aims and strategic intentions

- Continuously deliver a victim-focused response to ASB.
- Safeguard vulnerable victims and perpetrators of ASB, working in partnership through the Contextual Safeguarding process and Problem Solving Groups.
- Improve our understanding of ASB with and within our communities to address the full spectrum of ASB to deliver a more informed approach to addressing the underlying drivers of demand.
- Work with partners and residents to address neighbourhood and cross border issues.
- Challenge irresponsible business practice through licencing and trading standards functions.
- Working in partnership to improve fire safety and fire prevention.
- Work in partnership to mitigate the effects and consequences of off-road biking.
- Continue to tackle acquisitive crimes like burglary with a focus on prolific offenders.
- Develop prevention and early intervention initiatives in partnership to ensure a holistic approach to problem solving

### Outcomes we want to achieve

- Seek to reduce the number of repeat victims to incidents of ASB and neighbourhood crime
- Comprehensive ASB profile for Swansea to inform operational tactics.
- Evening & Night Time Economy strategy links to Safer Swansea priorities and works to reduce the impact of ASB
- Aim to promote and raise awareness of the correct procedures to report ASB
- Improve the way issues and concerns are and escalated to Problem Solving Groups and outcomes monitored.
- Seek to reduce the number of deliberate fire incidents/ off road biking incidents

## PRIORITY 2 – Tackling Hate Crime, Community Tensions & Extremism

Key areas of focus :

- Community Cohesion
- Hate Crime
- Prevent

### Why is this a priority?

- Any acts or threats of violence, property damage, harassment, intimidation, or other crimes motivated by hate and bias have debilitating effects on victims and wider communities and impact directly on community cohesion.
- Confidence in the partnerships ability to both educate and deal effectively with these issues will increase reporting and ensure our joint response is both informed and robust.
- Community cohesion is critical to maintaining safer communities and both an understanding and the implementation of strategies to calm local and regional tensions will achieve this goal.
- Doing our very best to be proactive as a partnership to deliver locally on the Government's CONTEST Strategy<sup>1</sup>, ie., Prevent, Pursue, Protect and Prepare, to counter any rise in extremism and acts of terrorism that is critical to community cohesion and safety of the public.
- We need the support and confidence of communities to improve our ability to identify those people who are most vulnerable to radicalisation and who may need support and intervention.

### Our aims and strategic intentions

- Deliver locally on the Welsh Governments Community Cohesion Strategic Framework and Hate Hurts Wales agenda.
- Increase confidence of victims to report incidents of hate crime and improve third party reporting
- Ensure staff are trained on reporting hate crime/hate incidents outside of the police through Victim Support.
- Encourage more residents to be 'supportive bystanders' if hate incidents are witnessed.
- Support victims of hate crimes.
- Safeguard those at risk of radicalisation.
- Ensure frontline professionals are trained in the Prevent duty and referral process.
- Maintain a strong focus on community cohesion activities and tensions monitoring.
- Work with Counter Terrorism Police Wales security advisors to improve the resilience of the built environment.
- Improve the safety and security of crowded places and points of interest in the City through preventative, physical measures.

### Outcomes we want to achieve

- Seek to improve the number of reported hate crimes and to respond
- Support and protection for victims of hate crime.
- Regular training and awareness of hate crime and Prevent for front line staff.
- Seek to increase the number of Prevent Referrals through education and training.
- Improved public trust and confidence that support is available and that everybody is treated fairly.
- Ensure people know what to do if concerned about someone who is vulnerable to radicalisation or think are being radicalised.
- Establish a Hate Crime Perpetrator MARAC.
- Produce counter-narrative to assist in deconstructing and delegitimise propaganda/fake news/conspiracy theories around hate crime and extremism.

<sup>1</sup> <https://www.gov.uk/government/publications/counter-terrorism-strategy-contest>

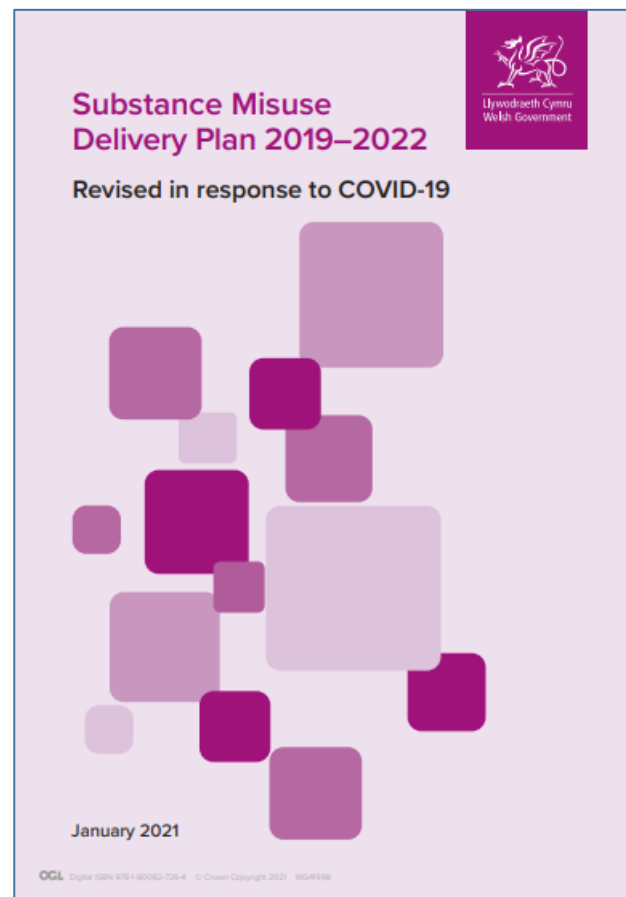
## PRIORITY 3 – Challenging Substance Use

Key areas of focus :

- Engagement
- Interventions and Treatment
- Prevention and Health Improvement
- Enforcement (SWP)

### Why is this a priority?

- Welsh Governments Substance Misuse Delivery Plan 2019-22<sup>2</sup> outlines key priorities for the next 3 years to tackle substance misuse.
- This plan builds on the good progress made in the lifetime of the previous 2008-18 strategy, 'Working Together to Reduce Harm' which saw progress of key harm interventions.
- Swansea is consistently the Local Authority with the highest drug related deaths.
- Western Bay Drugs Commission



### Our aims and strategic intentions

- Reducing harms and relative risks associated with drug and/or alcohol use.
- Timely support for people to improve their health and aid and maintain their recovery.
- Supporting and protecting families.
- Tackling substance availability and protecting individuals and communities.
- Stronger partnerships, workforce development and Service User Involvement.
- Recognise the realities of poverty, class, racism, social isolation, past trauma, sex based discrimination and other social inequalities that affects people's vulnerability and capacity to effectively deal with drug related harm

### Outcomes we want to achieve

- Reducing the number of drug related deaths in Swansea (and Neath Port Talbot).
- Reducing the harms associated with substance use
- Embedding Service User involvement into delivery and planning of services.
- Substance use issues are identified and challenged early through strong partnership working and information sharing.
- Everyone across the region affected by substance use issue can access timely, evidence based, safe and effective quality services

<sup>2</sup> [Substance misuse delivery plan: 2019 to 2022 | GOV.WALES](https://gov.wales/substance-misuse-delivery-plan-2019-to-2022), (delivery plan is running until 23/24, review delayed due to the pandemic)



### **Our aims and strategic intentions**

- Increase support to offenders with access to housing, training and employment, financial aid, debt recovery and drugs and alcohol service
- Work in partnership to reduce reoffending
- Support those who misuse drugs and/or alcohol to successfully complete community/facility based treatment
- Enforce against persistent/prolific offenders who misuse drugs/alcohol
- Implement the refreshed Integrated Offender Management framework
- Protect the public from prolific offenders through Multi-Agency Public Protection Arrangements.
- Continue to support those that are vulnerable and homeless through the Street Vulnerability MARAC.
- Review opportunities to improve referral rates to drug and alcohol services
- Support the youth justice service to reduce first time entrants and re-offending rates of children and young people
- Continue to provide support for young people who are involved in offending,
- Work in partnership, locally and nationally, to disrupt and prevent serious and organised crime to reduce the impact of its resulting social harms on communities and residents

### **Outcomes we want to achieve**

- Increase in number of CTSR's for appropriate individuals in Swansea
- Reduction of reoffending rates across Fixed, Flex and Free IOM Cohorts within Swansea
- Successful disruption and enforcement of SOC nominals
- Visible drug and alcohol use and dealing reduced
- Reduction in the reoffending rate for adults and juveniles.
- Reduce reoffending behaviour through Integrated Offender Management
- Fewer first time entrants into the criminal justice system.



## PRIORITY 5 – Violence against Women, Domestic Abuse and Sexual Violence (VAWDASV)

Key areas of focus :

- Challenging attitudes to VAWDASV
- Holding perpetrators to account
- Ensuring victims have equal access to all services
- Early Intervention, protection and support
- Training professionals
- Educating children and young people

### Why is this a priority?

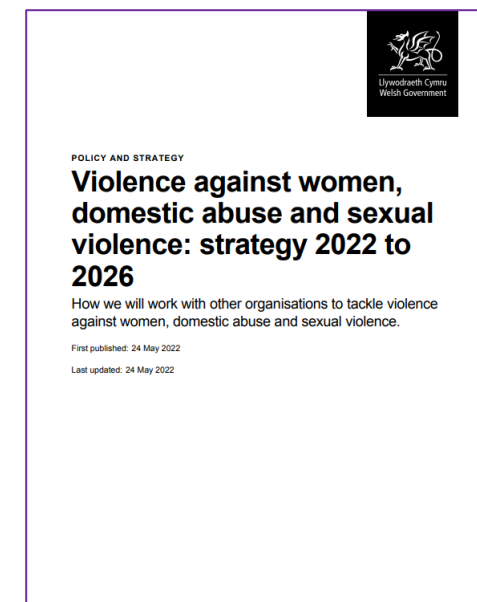
The objectives within this strategy are derived from those published in the National Strategy 2022-26. Having similar objectives within Swansea will enable us to demonstrate how we will support the Welsh Government in achieving its policy objectives regarding Violence Against Women, Domestic Abuse and Sexual Violence. These objectives support our vision for ALL citizens in Swansea to be safe, happy and healthy and live fear free from violence and abuse in all its forms.

### Our aims and strategic intentions

In line with Welsh Government’s National Strategy on Violence against Women, Domestic Abuse and Sexual Violence (2022-2026<sup>3</sup>), we have seven objectives:

- Challenge harmful public attitude to violence against women, domestic abuse and sexual violence across Swansea through awareness raising and space for public discussion with the aim to decrease its occurrence.
- Increase awareness in children, young people, of the importance of safe, equal and healthy relationships and empowering them to positive personal choices.
- Increase the focus on holding those who commit abusive behaviour to account and support those who may carry out abusive or violent behaviour to change their behaviour and avoid offending.
- Make early intervention and prevention a priority.
- Relevant professionals are trained to provide effective, timely and appropriate responses to victims and survivors.
- Provide all victims with equal access to appropriately resourced, high quality, needs-led, strength-based, inter-sectional and responsive services across Wales.
- Prepare robust evidence to inform our work.
- We will do all we can to identify offenders or potential offenders and prevent them from causing harm.
- We will divert males away from behaviour, which is controlling, threatening, intimidating or violent towards women and girls.
- We will be pro-active in the way we prevent offences from occurring.
- We will demonstrate that violence against women and girls will not be tolerated.

- Where offenders are convicted and subsequently released, we will ensure all partners work together so that those considered most dangerous are effectively managed to prevent re-offending
- Working with our partners and making best use of intelligence, we will identify places and environments which create opportunities for perpetrators to target women and girls.
- We will problem solve to mitigate the risks in these areas and ensure that partnership activity is effectively managed to prevent offending.
- We will listen to the concerns of women and girls to inform our approach to making spaces safer, including online spaces.
- We will empower and educate others to help keep women and girls safe. This includes working with all partners in proportionate interventions like facilitating vulnerability training.



<sup>3</sup> [Violence against women, domestic abuse and sexual violence: strategy 2022 to 2026 \[HTML\] | GOV.WALES](#)

**Outcomes we want to achieve**

- Ensure the voice of the service user is heard and listened to.
- To stop 'victim blaming'.
- Prevent and reduce VAWDASV.
- Increase in referrals to DV specialist agencies and Police and Health.
- All victims to have equal access to appropriate services
- Negative attitudes are challenged and communities are educated and better informed of the issues around VAWDASV.
- There is a multiagency approach to ending VAWDASV.
- VAWDASV is 'everyone's business'.
- Victims and perpetrators are offered support at the earliest possible time and to prevent cases reaching a point of crisis.
- There is a regional and national collaborative approach to VAWDASV.
- Perpetrators are held accountable.
- Victims are fully informed and supported through the Civil and Criminal justice system.
- Professionals are more informed and confident in reporting incidents of abuse.
- A decrease in the fear of this type of criminality.
- A positive increase in the perception of Swansea as a safe space.

DRAFT

## PRIORITY 6 – Violence reduction: Safeguarding those at risk of Violence & Exploitation

Key areas of focus :

- Exploitation/ victimisation
- County Lines
- Knife crime
- Modern slavery
- Serious violence
- Domestic Homicide Reviews
- Contextual safeguarding

### Why is this a priority?

- Serious violence has a devastating impact on lives of victims and families, and instils fear within communities and is extremely costly to society. Incidents of serious violence have increased in England and Wales since 2014. The newly introduced Home Office Serious Violence Duty is a key part of the Government’s programme of work to collaborate and plan to prevent and reduce serious violence: taking a multi-agency approach to understand the causes and consequences of serious violence, focusing on prevention and early intervention, and informed by evidence.
- Tackling serious violence has been a key aim for the Police and Crime Commissioner since 2012, using data sharing with health to pinpoint where and how violence occurs. Working closely with the Violence Prevention Unit, we can seek to understand the epidemiology of violence, and using this evidence to develop interventions focused on tackling the root causes of violence.
- In Swansea we recognise the significant impact youth violence and exploitation can have on a young person’s safety, health and wellbeing. The Local Authority are committed to reducing youth violence in Swansea and providing the right service at the right time to young people who have been adversely affected by youth violence.
- Through our contextual safeguarding work we have come to understand that as well as considering adverse experiences that we know can impact on these concerns such as violence in the home, parental substance misuse, school exclusions, neglect and trauma, we need to also consider the context of where this harm occurs which is often outside of the family environment and in the places and spaces where young people spend time.

### Our aims and strategic intentions

- Tackle hidden, high harm crimes such as modern slavery.
- Partnership response to tackling violent crime, including knife crime, serious youth violence, group offending and gang violence, implementing the New Serious Violence Reduction Plan.
- Take a safeguarding approach to both victims and perpetrators of violent crime, considering adverse childhood experiences (ACEs) of those affected and adopting a public health approach to addressing violence.

- Ensure access to statutory mental health support for both victims and perpetrators of violence.
- Ensure arrangements are in place throughout the partnership to effectively prevent and address both Child Criminal Exploitation and Child Sexual Exploitation.
- Ensure intelligence is shared and activity is informed to provide both a preventative and enforcement response to county lines throughout partnership arrangements.

### Outcomes we want to achieve

- Strategic Needs Assessment to be completed for the South Wales Police force area relating to the Serious Violence Duty.
- Serious Violence Problem Profile completed for Swansea.
- Development of a Serious Violence action plan to address issues and provide partnership solutions to tackling the issues.
- Development of prevention and intervention initiatives.
- A holistic safeguarding approach offered to all young people who experience significant Extra Familial harm.
- Operational and Strategic approach to disrupting those that exploit young people.
- A multi agency approach to recognising and preventing early indicators of youth violence and child exploitation.
- Effective multi agency information sharing that supports the disruption of youth violence and exploitation.
- Identification and disruption of Exploitation by organised crime groups (OCG).
- Development of safety within the places and spaces young people spend time.

## HOW WE WILL WORK IN PARTNERSHIP

---

### Working with other partnership boards on shared priorities:

The Safer Swansea Partnership works closely with other strategic partnership boards, including:-

- i. Western Bay Safeguarding Board,
- ii. Area Planning Board,
- iii. Public Service Board

with each board having its own strategic priorities, but there are many overlapping agendas.

These include (but are not limited to):-

- Adult and children's safeguarding
- Violence
- Prevent, counter terrorism and extremism
- Reoffending
- Health harms related to drugs and alcohol.

The Safer Swansea Partnership believes that 'crime is everybody's business' and that there must be a strong emphasis on working collaboratively on common priorities.

## REPORTING ARRANGEMENTS

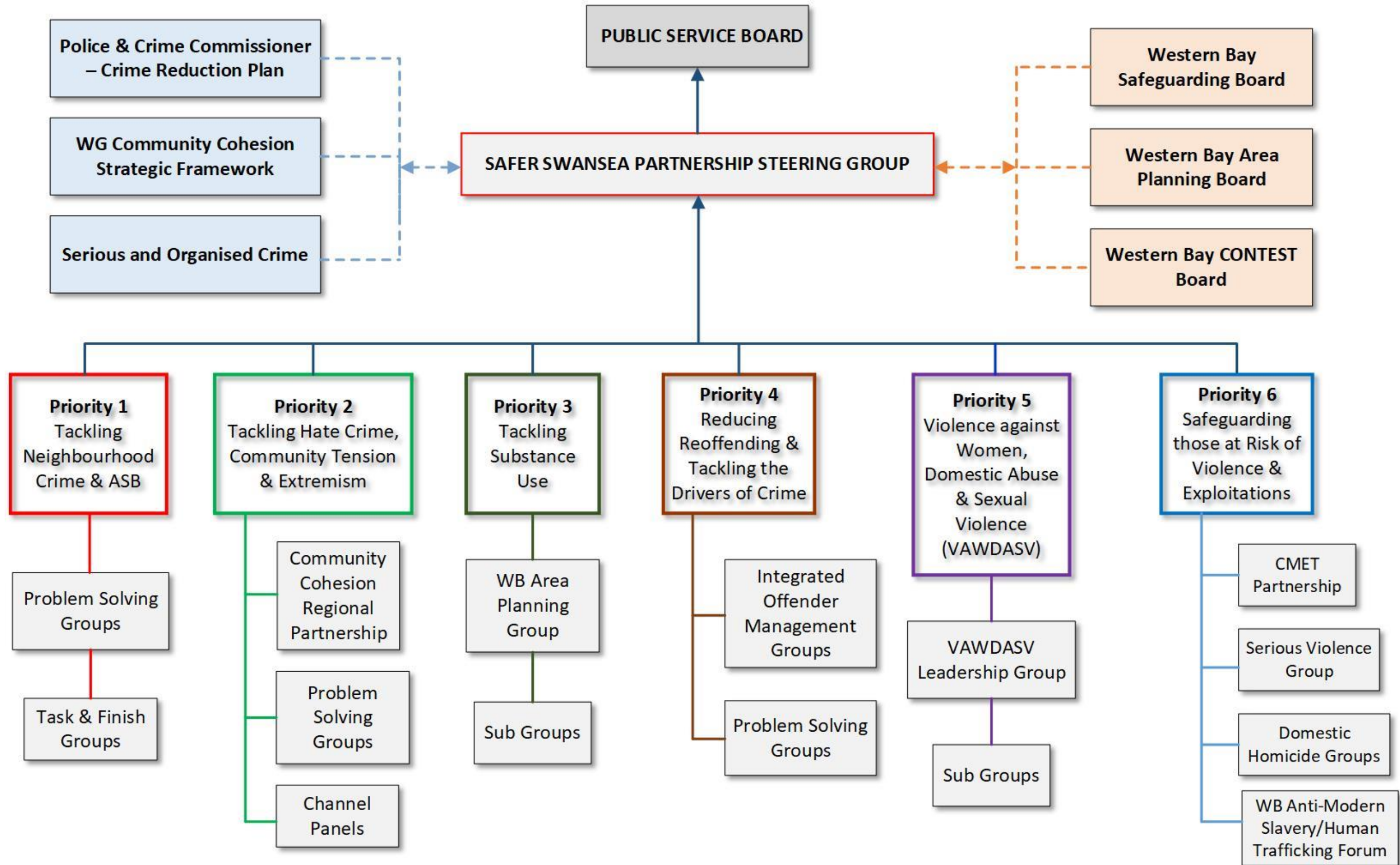
---

To measure success, Safer Swansea will draw on qualitative and quantitative data from a number of sources, including evaluation of projects and public consultation and feedback.

Each of the Safer Swansea Partnership priorities will be underpinned and supported by individual action plans. Progress will be monitored on a quarterly basis by the steering group and an annual report will be presented to the Public Service Board.

The following diagram shows the **Governance structure** and reporting pathways for the Safer Swansea Partnership Steering Group and its Priorities.

# SAFER SWANSEA PARTNERSHIP GOVERNANCE



## **RELATED STRATEGIES AND PARTNERSHIPS**

---

The Well-being of Future Generations (Wales) Act 2015 puts a Wellbeing duty on specified public bodies to act jointly and establish statutory Public Service Boards (PSBs) for each local authority area in Wales.

Future work and priorities of the Safer Swansea Partnership will link into the development of Local Wellbeing plans.

Another key strategy taken into consideration when formulating the priorities is the new Serious Violence Duty Dec 2022. The Duty is a key part of the Government's programme of work to collaborate and plan to prevent and reduce serious violence, and to take a multi-agency approach to understand the causes and consequences of serious violence, focusing on prevention and early intervention, and informed by evidence.

The Serious Violence Duty outlines the changes made to section 6 of the Crime and Disorder Act 1998, ensuring preventing and reducing serious violence is a priority for Community Safety Partnerships and requires specified authorities to collaborate and plan to prevent and reduce serious violence

The priorities set out in this document also co-exist alongside the South Wales Police Chief Constables Delivery Plan 2021-2025 and the Police and Crime Commissioners Police and Crime Plan 2022-2026. These are key strategies that align with the steering group's priorities, both of which strengthen the working links across key partners.

### **Wider links and interdependencies:-**

- Community Cohesion (Regional and Local)
- Channel Partnership (Local)
- Prevent (Local)
- Contest (Regional)
- Asylum Seekers and Refugee/Migration (Local)
- Western Bay Safeguarding Boards (Regional)
- Police and Crime Commissioner
- Public Service Board
- Children & Young People Partnership Board (Local)